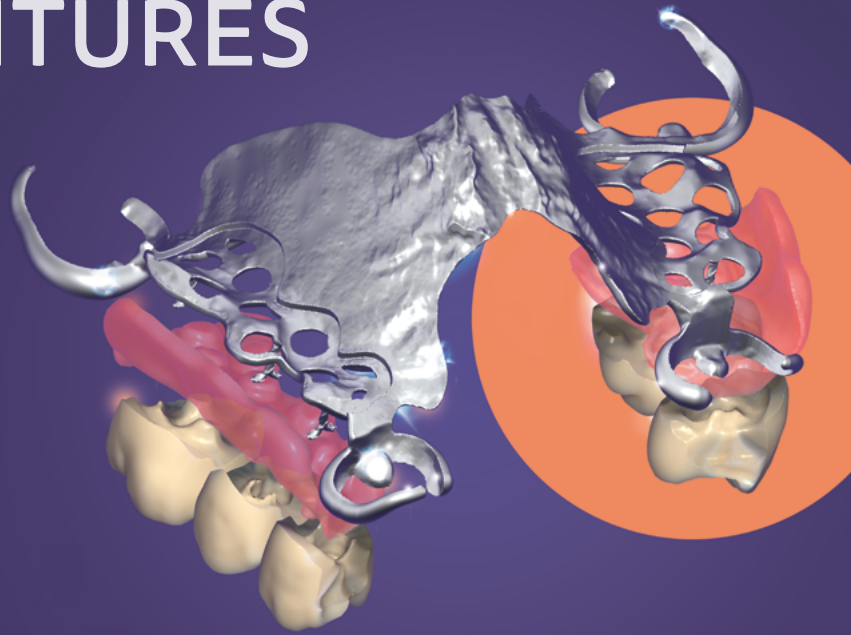


DESIGN NEXT-LEVEL PARTIAL DENTURES WITH EASE

WHAT'S
NEW



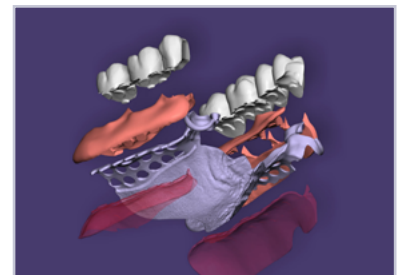
PartialCAD 3.1 Rijeka at a glance

PartialCAD 3.1 Rijeka fast-tracks your workflows with a revamped user interface that will wow you.

Go fully digital with all components of your partial denture

The patent-pending **QuickSnap*** feature divides the partial denture into pieces and enables an accurate assembly out of printed or milled parts that simply snap together—saving valuable time and standardizing your workflows.

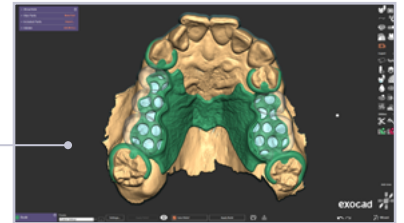
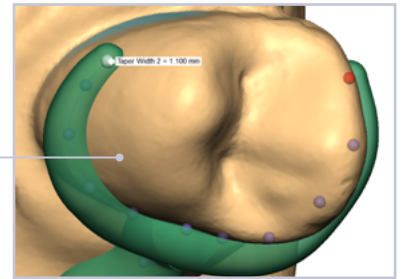
Teeth, gingiva above and below mesh, and frameworks can all be produced by CAD/CAM, in the individual materials.



*Beta version

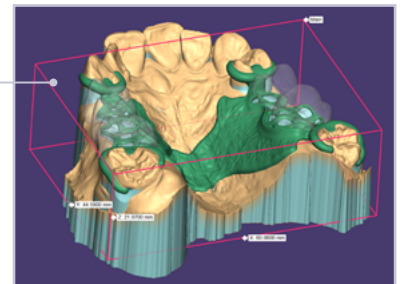
More intuitive and faster user interface

- **Customize your partial designs with efficiency:** With presets, your personalized design settings can be applied swiftly and with ease.
- **Easier clasps and bars editing:** Easily adjust the thickness and width of each bar and clasp with the mouse wheel.
- **More automation and easier editing:** The new Mesh Rim feature automatically adds a thickened edge around your mesh areas. We've further enhanced the Interactive Finish Line editing for speed and usability.
- **Every UI element now upgraded:** Enjoy better usability, readability and uniformity with the *DentalCAD* visual style.



New measurement tools

- **Show Wax Dimensions:** View the dimensions of the overall design, providing an improved preview for production planning and printing.
- **Cut View:** Evaluate designs and take multiple measurements of the layer thicknesses simultaneously.



Control your build

- The build tool now features newly organized settings with custom presets and an animated exploded view of the built parts.



exocad.com/partialcad-rijeka

Find your exocad dealer here: exocad.com/partners

exocad GmbH

Some products may not be regulatory cleared/released for sale in all markets. Please contact your local exocad reseller for current product assortment and availability.

