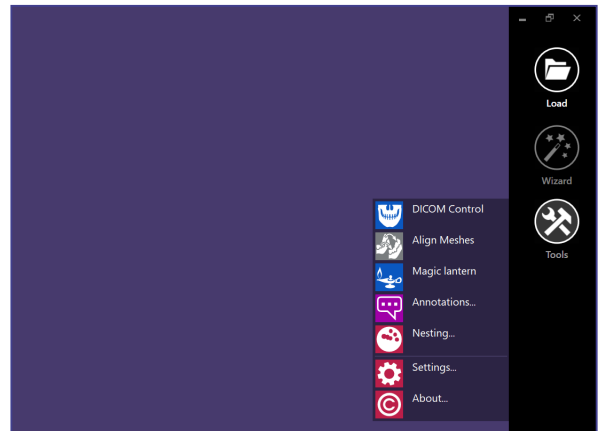
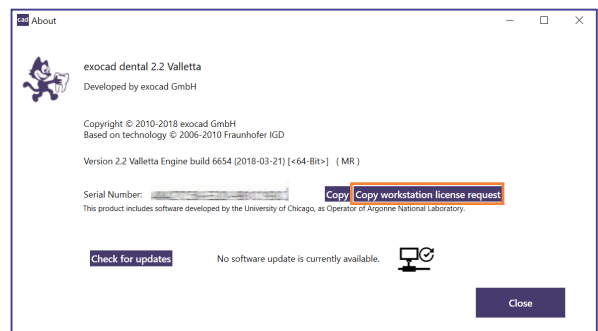


Supplying the .licenseRequest file

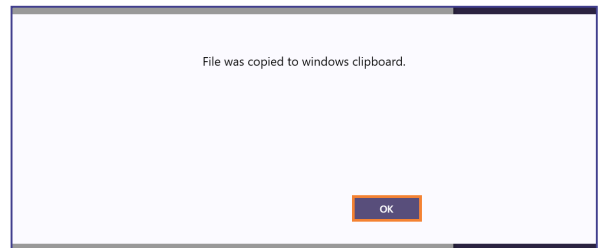
1. First, start your software application (eg. DentalCAD)
2. Click the **Tools** button and choose **About**. The About window is displayed.



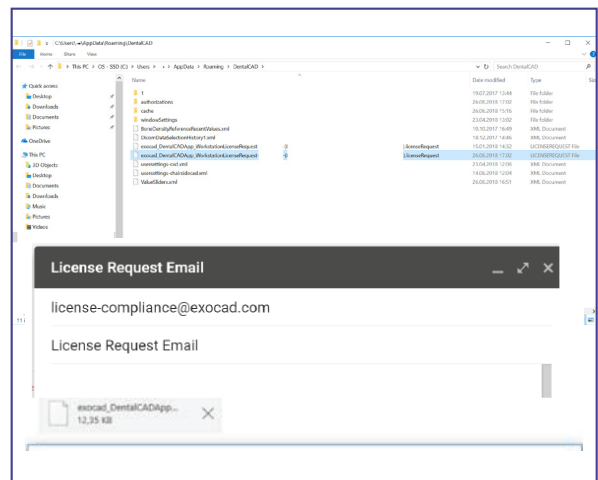
3. In the **About** window, click **Copy workstation license request**.



4. Click **OK**.



5. Windows Explorer opens and displays the folder where the license request is stored (.licenseRequest file is preselected).



Select the license request file, attach it to your email client and send it to:

license-compliance@exocad.com