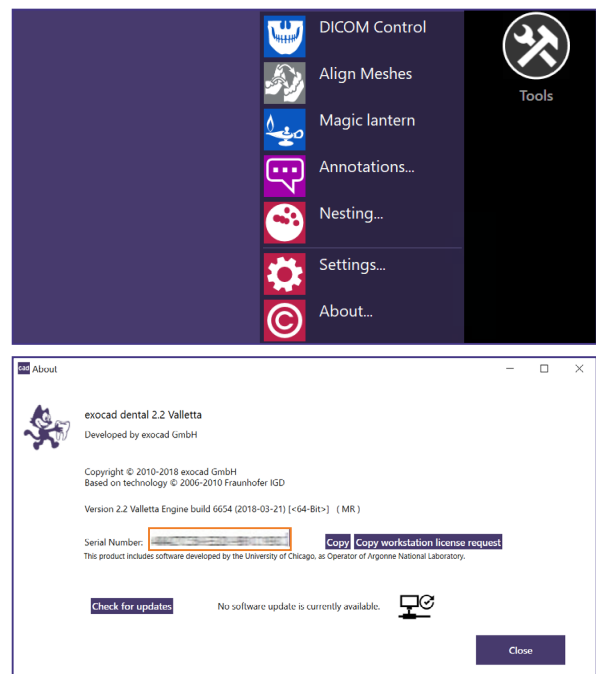


By using *DentalCAD*, *ChairsideCAD* or *exoplan* (activated)

1. Plug in your dongle into your PC or laptop.
2. Run the *DentalCAD* application
../DentalCADApp/bin/DentalCADApp.exe

or *ChairsideCAD* application
../ChairsideCAD/bin/DentalCADApp.exe

or *exoplan* application
../ImplantPlanning/bin/ImplantPlanning.exe
3. Click on **Tools** in the main menu on the right side of the screen.
4. Choose and click **About**.
5. Copy the serial number to your clipboard by clicking on **Copy**.



By using *DentalCAD*, *ChairsideCAD* or *exoplan* (not yet activated)

1. Plug in your dongle into your PC or laptop.
2. Run the *DentalCAD* application
../DentalCADApp/bin/DentalCADApp.exe

or *ChairsideCAD* application
../ChairsideCAD/bin/DentalCADApp.exe

or *exoplan* application
../ImplantPlanning/bin/ImplantPlanning.exe

3. The software will ask you for activation. You find the serial number in the window that appears.

