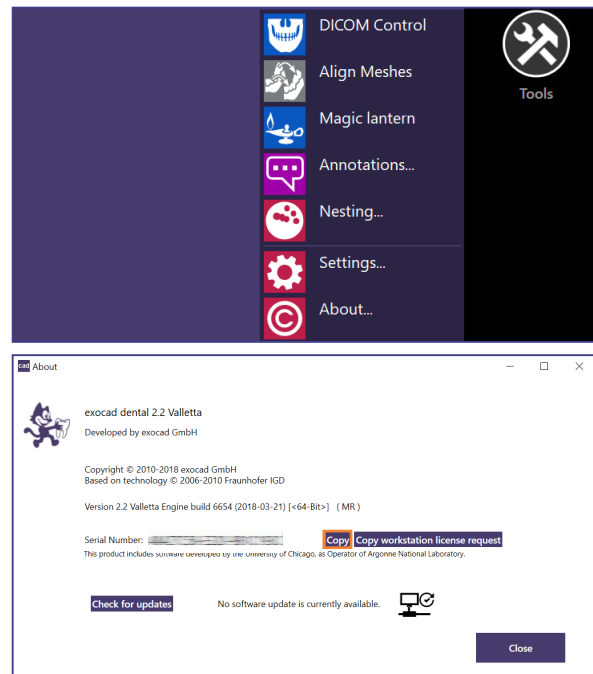


## Obtaining your dongle serial number using *DentalCAD*, *ChairsideCAD* or *exoplan* (activated)

1. Plug your dongle into your PC or laptop.
2. Run the *DentalCAD* application  
../DentalCADApp/bin/DentalCADApp.exe  
  
or *ChairsideCAD* application  
../ChairsideCAD/bin/DentalCADApp.exe  
  
or *exoplan* application  
../ImplantPlanning/bin/ImplantPlanning.exe
3. Click **Tools** in the main menu on the right side of the screen.
4. Click **About**.
5. Copy the serial number to your clipboard by clicking **Copy**.



## Obtaining your dongle serial number using *DentalCAD*, *ChairsideCAD* or *exoplan* (not yet activated)

1. Plug in your dongle into your PC or laptop.
2. Run the *DentalCAD* application  
../DentalCADApp/bin/DentalCADApp.exe  
  
or *ChairsideCAD* application  
../ChairsideCAD/bin/DentalCADApp.exe  
  
or *exoplan* application  
../ImplantPlanning/bin/ImplantPlanning.exe
3. A dialog appears prompting you to activate the software. Your serial number is displayed in this window.
4. Press **CTRL** and **C**, paste the text into any document and copy the serial number.

