



# exocad

## *exoplan*

Inspiring excellence in guided surgery

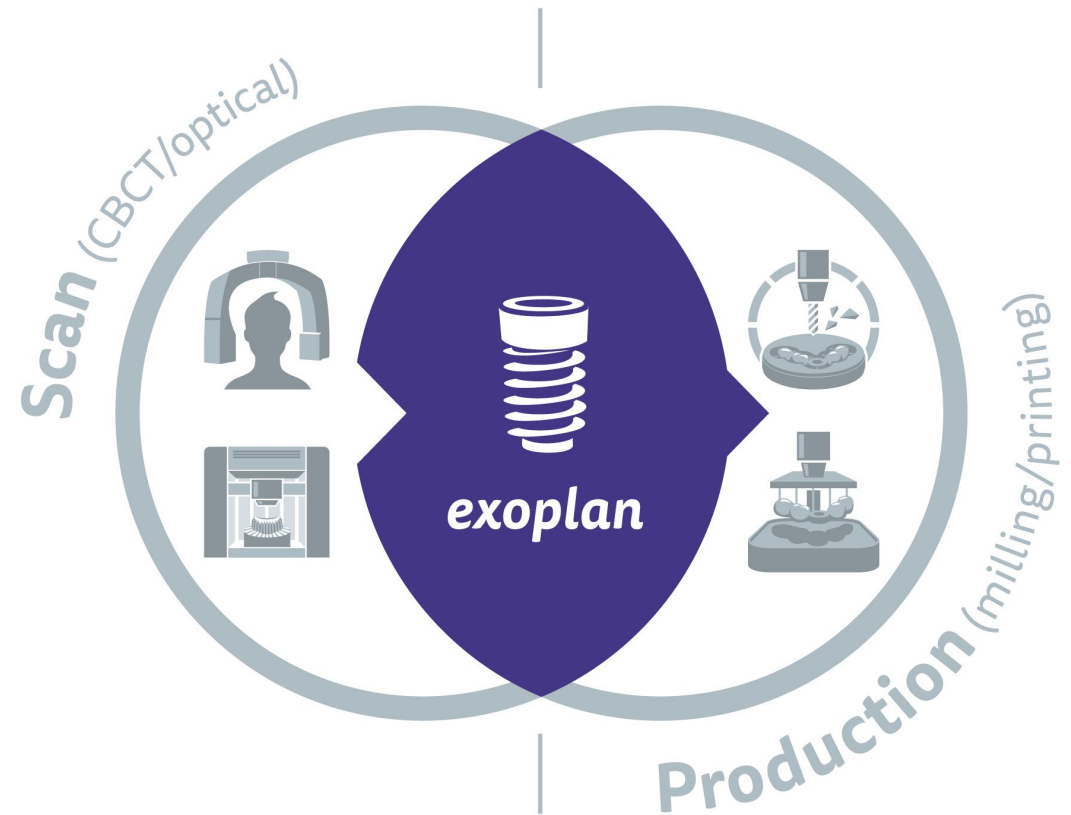
exocad GmbH

November 2018

**exocad.com**

# *exoplan* in a nutshell

- The new *exoplan* software is designed to **easily guide** dental labs, dentists, implant specialists and surgeons through the **planning of implants** and the **designing of surgical guides**
- *exoplan* has been created to provide users with **maximum flexibility**
- Based on the renowned exocad platform, *exoplan* guarantees:
  - seamless digital workflow
  - highest usability
  - highest performance



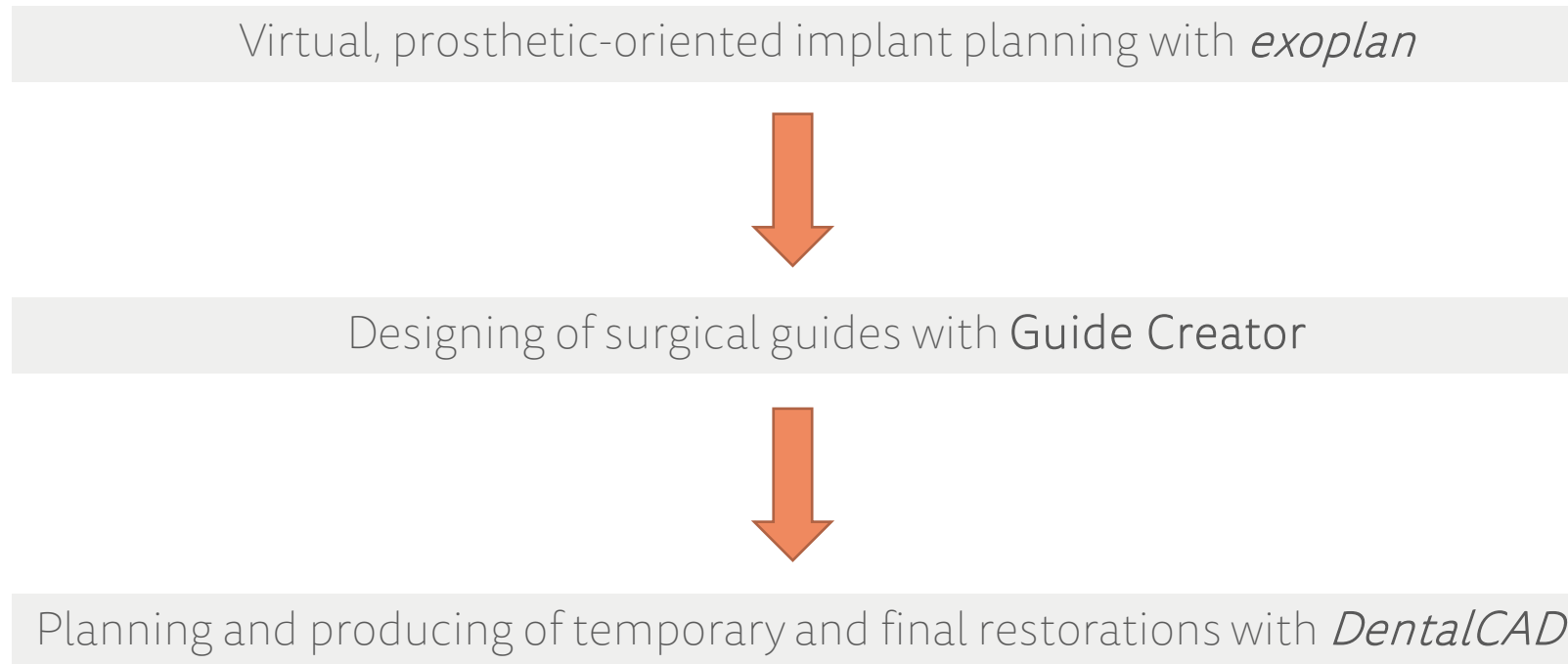
# *exoplan* in a nutshell

- *exoplan* consists of **two software components**:
  1. **Implant planning**: plan the right position of the implant with the help of a 3D model of the patient's jaw
  2. **Guide Creator**: design a surgical guide based on the planning that was carried out in the first step



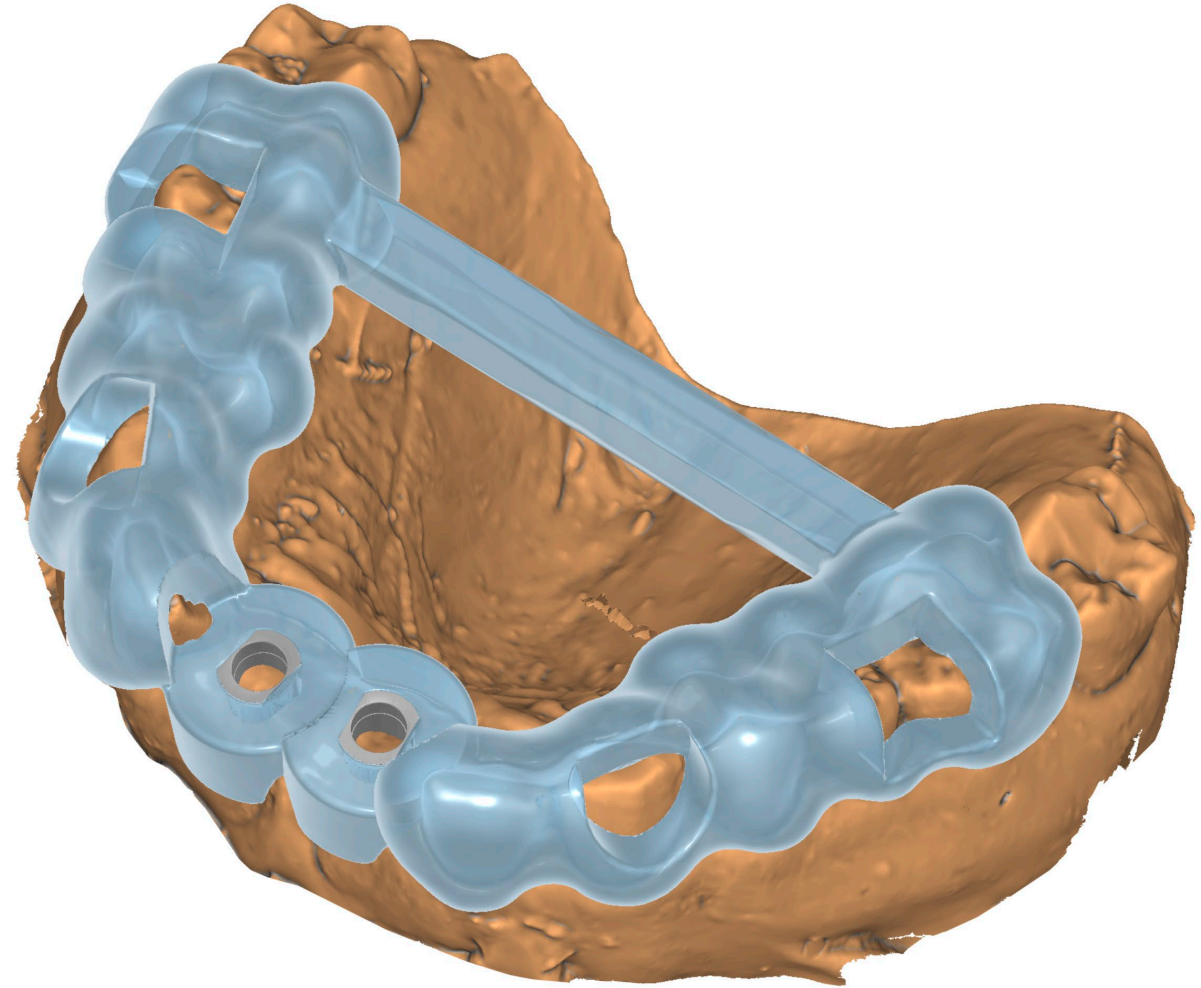
# Seamless functionality of the digital workflow plan

- *exoplan* users can take advantage of seamless integration with exocad's CAD software platform.



# In-house surgical guides – with Guide Creator module

- *exoplan* helps to **maximize the return on hardware investment**:
  - Design surgical guides and **manufacture in-house** with a 3D printer or milling machine
  - Thanks to the standard data format STL, users have the **freedom to choose** their own hardware or production center



## Free choice – comprehensive implant and component library

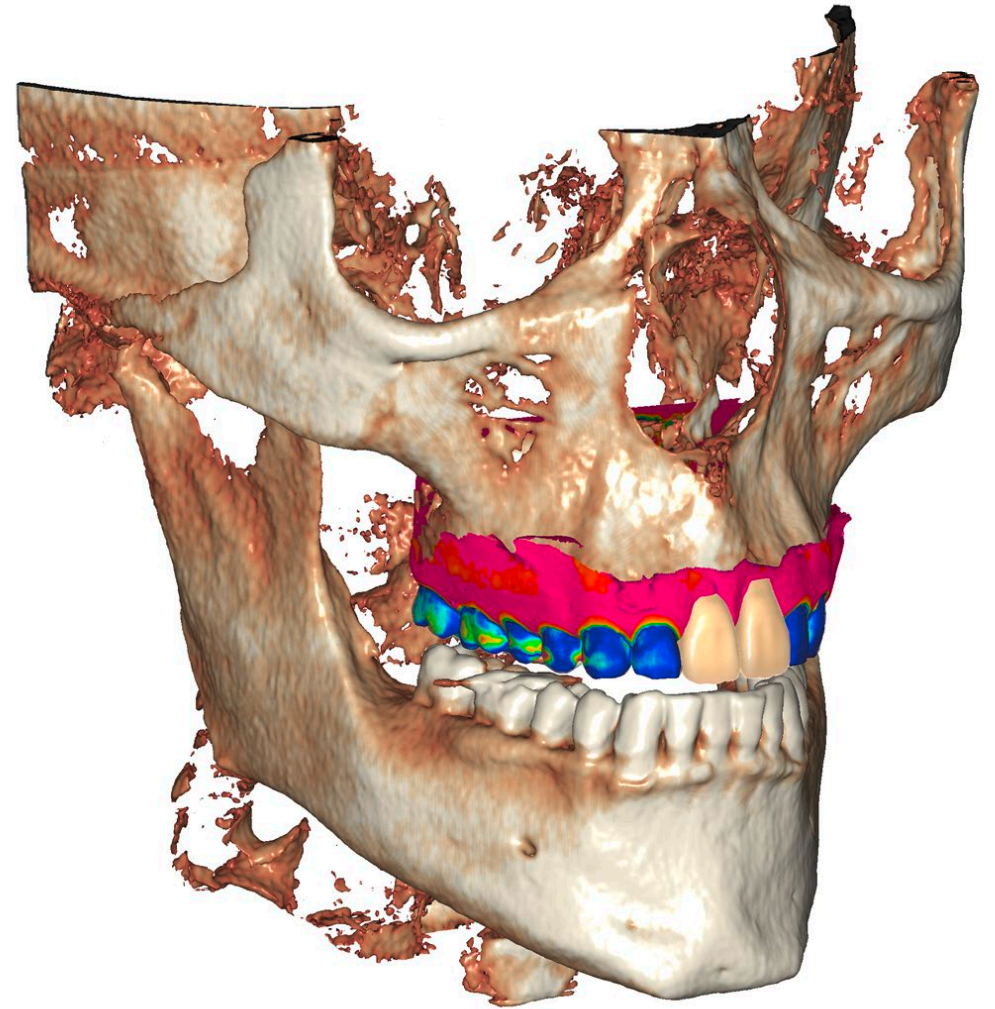
- The *exoplan* library comprises **over 250 different implant systems** from:
  - top-tier manufacturers, such as Straumann, Dentsply Sirona, Zimmer or Camlog
  - numerous local players
- Users can also access exocad's **comprehensive library** of over **2000** prosthetic components





## Highest accuracy – alignment of scan data

- Combine CBCT and surface scan data of a model by taking advantage of exocad's robust alignment tools
- Additional refinement features **maximize the accuracy** of the aligned scans



## High usability – wizard & expert modes

- Thanks to *exoplan's* intuitive guided approach, implant planning with **consistent results** has never been easier!
- exocad's proven **wizard-based workflow** guides users through every step of the process
- In *exoplan's* expert mode, users can **access extensive supplementary features and tools**



**Wizard**



## Ultrafast – *exoplan*'s DICOM viewer

- *exoplan* sets a benchmark with one of the **best** DICOM viewers in terms of usability and speed
- Due to optimized data handling algorithms and snappy graphics rendering, *exoplan* provides market-leading DICOM loading and visualization speed



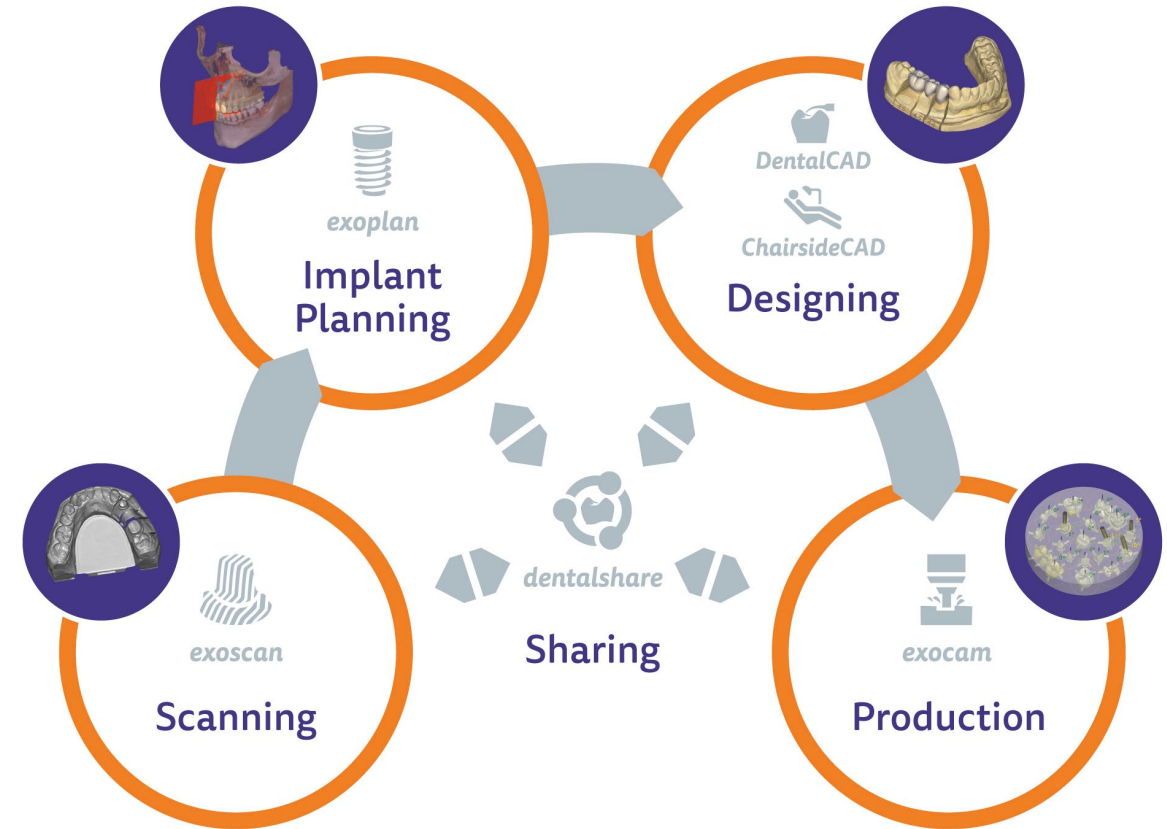
# Secure – planning reports and surgical protocols

- *exoplan* helps to facilitate communication between labs and dentists or surgeons through detailed reports and surgical protocols
- Every case and component configuration is documented automatically



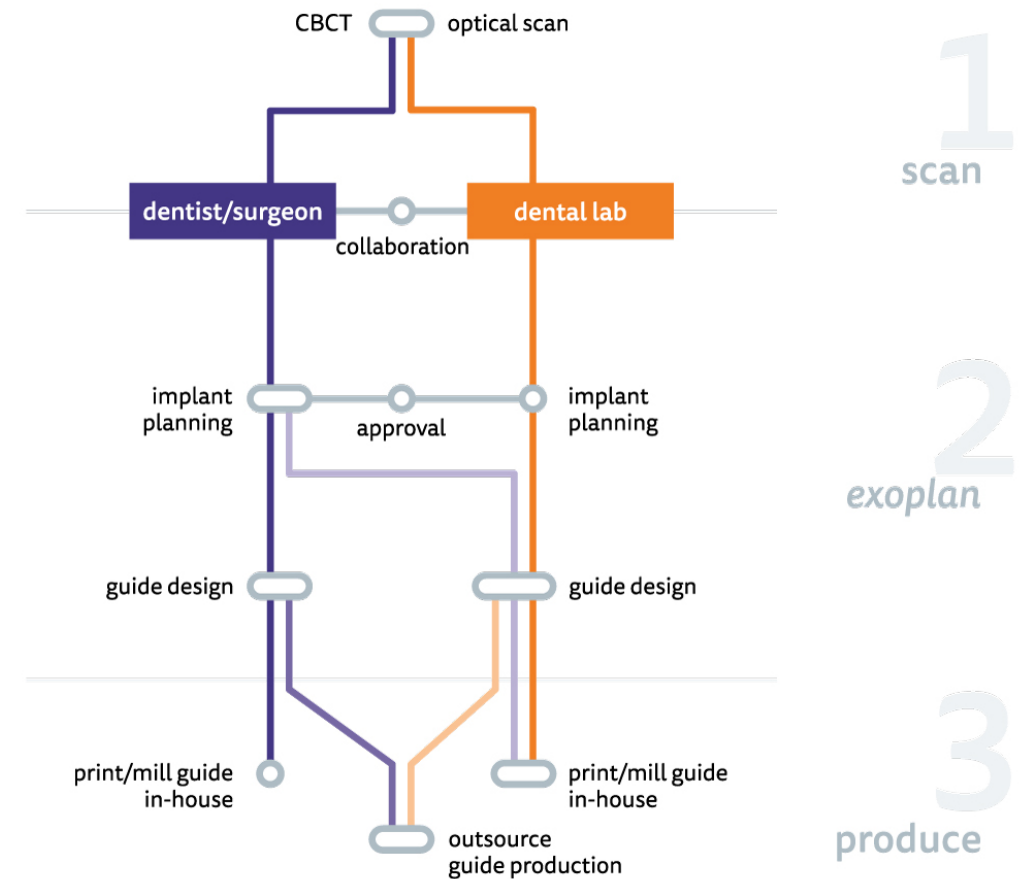
# One platform – numerous advantages

- *exoplan* is built on the world-renowned and worldwide leading **exocad** CAD software platform
- This makes *exoplan* a very **proven and stable software application** with numerous user benefits
- *exoplan* can easily and **seamlessly be integrated** with all exocad products and modules related to implant indications
- exocad software solutions offer the **perfect symbiosis of prosthetics and implant planning** for reliable, cost- and time-efficient results.



# Exceptional flexibility with *exoplan*

- Thanks to open, yet integrated solutions for digital dentistry, *exoplan* users are in **control of the desired workflows**
  - While surgeons may only need our *exoplan* planning tools, dental practices and laboratories benefit from the complete solution including our Guide Creator module.





# No hidden cost

- *exoplan* helps to maximize profits with exocad's **simple and transparent pricing model**
- *exoplan* has **no click-fees and no hidden costs**.
- With a low annual fee – which includes updates to future versions – users have **access to the software for an unlimited number of cases**
- The modular software structure with the implant planning component and Guide Creator module ensures that users **only pay for what they really need**
- Thanks to its open and vendor-neutral software architecture, users can **use *exoplan* with existing equipment**, such as any open 3D scanner, milling machine or 3D printer





# exocad

Your freedom is our passion

**exocad.com**



[facebook.com/exocad](https://facebook.com/exocad)



[facebook.com/groups/exocadexperts](https://facebook.com/groups/exocadexperts)



[linkedin.com/company/exocad-gmbh](https://linkedin.com/company/exocad-gmbh)



[videos.exocad.com](https://videos.exocad.com)